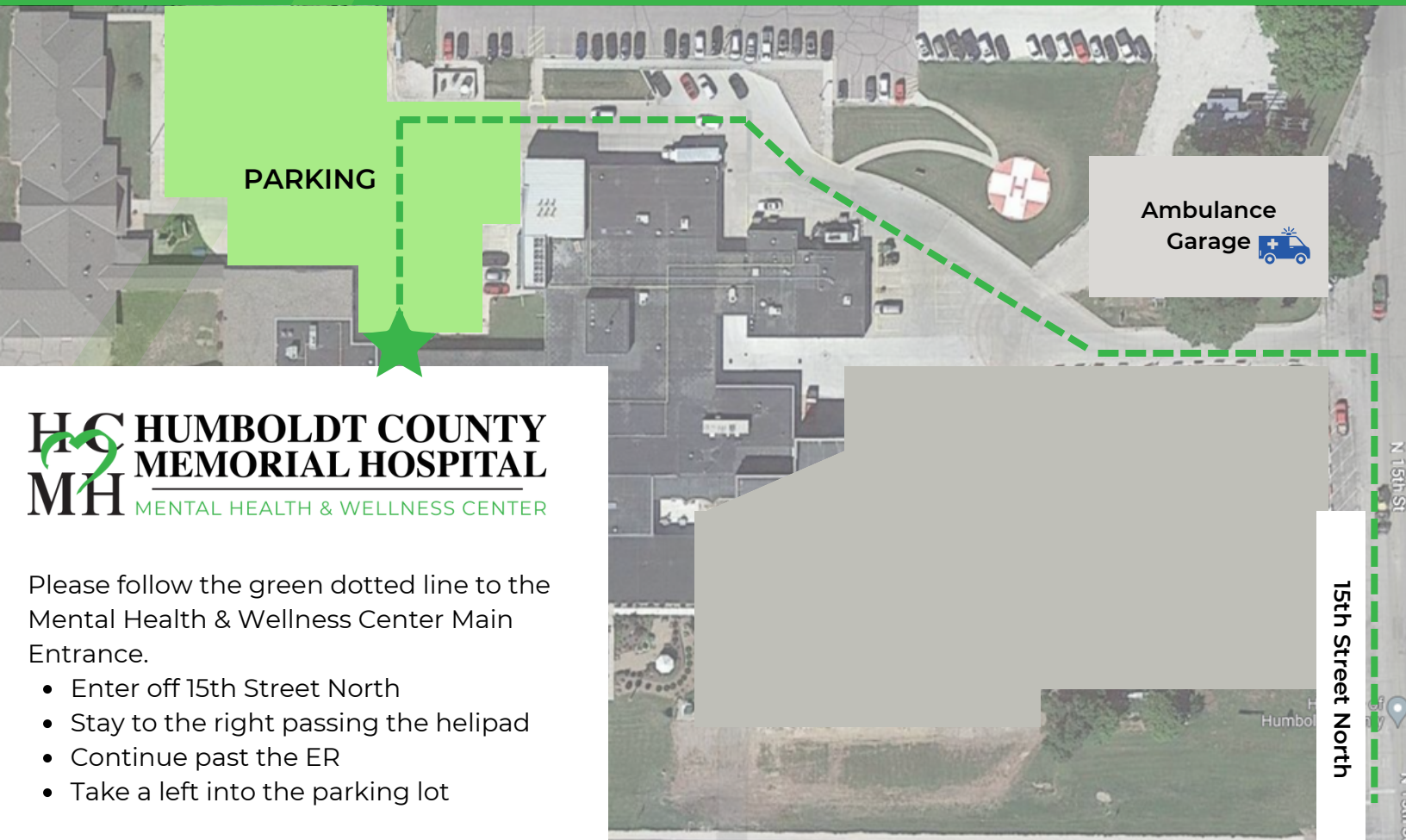


Parking Information

Our office is located in the back of the hospital near Public Health , Surgery and Springvale Assisted Living. (See map below for directions).

If you have any questions please call our office at 515-332-7672.



HUMBOLDT COUNTY
MEMORIAL HOSPITAL
MH MENTAL HEALTH & WELLNESS CENTER

Please follow the green dotted line to the Mental Health & Wellness Center Main Entrance.

- Enter off 15th Street North
- Stay to the right passing the helipad
- Continue past the ER
- Take a left into the parking lot